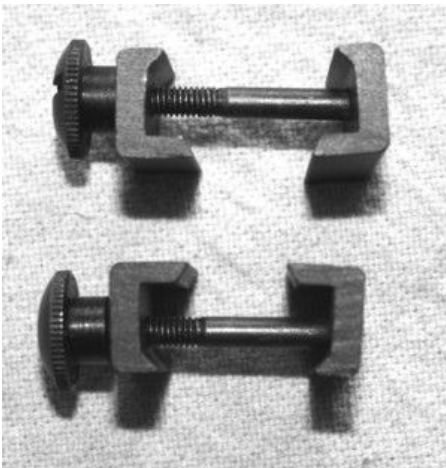


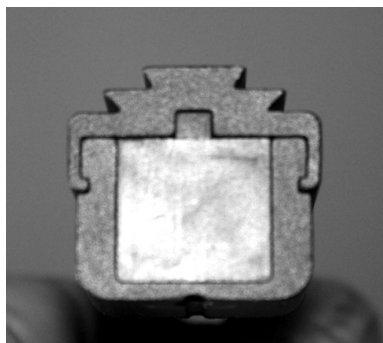
Instructions for Installation of the NCStar Red Dot Sight

B&D provides an NCStar red/green dot sight with all TBL configurations that we sell. We also sell this sight as an accessory and as part of the UBL-37 Expansion Pack. These notes will help you install the sight on the mil-spec Picatinny rail installed on all B&D launchers.

1. The NCStar sight comes with two mounting brackets. The clamps on each bracket have a top and bottom. The top of the clamps have a *Narrower* spacing than the bottom. Make sure that the clamps are oriented so that the width of the two clamps are on the same side.



2. It is important to understand that the dovetail on the sight that these clamps attach to is *Narrower* than the dovetail on the B&D launcher. In the photo, it is the uppermost dovetail.



IMPORTANT!

3. Remember that the *Wider* opening on each clamp must go on the launcher's dovetail and that the *Narrower* opening must go upward to match the dovetail on the sight.
4. Turn the knurled nut counterclockwise on both clamps to open them. Take care to not open them so far that the nut falls off!!
5. Position the first clamp at the end of the Picatinny Rail on the launcher.



6. Seat the clamp on the rail making sure that you opened it wide enough so that the edges of the clamp extend beyond the edge of the rail. Did you remember to position the *Wide* side of the clamp downward?



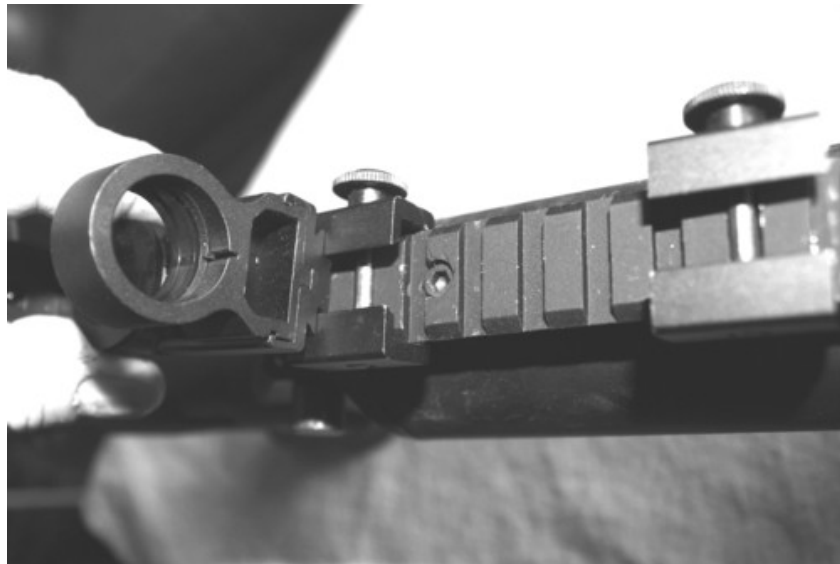
7. Tighten the nut just enough so that the clamp does not fall off.

8. Take the scope and line it up to gauge where the second clamp should go. The only real requirement is that the sight should cover the clamp once it is installed. It is easier if you count the grooves to help you remember where to put the clamp.



9. Install the second clamp as you did the first making the nut finger tight.

10. Now to install the scope! Gently line the Lower dovetail on the scope up with the opening of the first clamp. (You may wish to start from the butt end of the launcher for this operation. The direction is optional.) You might have to slightly loosed the clamp nut to allow the sight dovetail to engage with the clamp. NOT TOO MUCH!! Or you will have many pieces on your table and you will not be happy.



11. Slide the scope until it engages both clamps. Once it is engaged by both clamps take a step back and rest for a moment. Now, move the sight forward or back until it is where you want it. If you tighten the nuts a bit, you might want to put the launcher on your shoulder to see if the distance from your eye is comfortable.



IMPORTANT!!

If, with use, you find that the scope is too far back or too far forward, you may adjust it through the simple expedient of loosening **BOTH** nuts and sliding the scope to a better position. Remember to take care to not loosen the nuts so that they fall off. Nuts on the floor are no laughing matter!!

12. Tighten the nuts. You may have to take a plier and Gently tighten them until there is no movement in the scope.

13. Enjoy your launcher!!

